

I.C.P. Srl	SERVICE BULLETIN	02-2005	Emitted il 07/07/05	Page 1 di 2
-------------------	-------------------------	----------------	---------------------	-------------

REV. 00

del: 07/07/05

CLASSIFICATION: MANDATORY

SUBJECT: mandatory check of the front strut attachment SA086 on the wing for aircrafts Savannah™, Savannah™ ADV e Bingo: N.B. the check is extremely precautionary, due to the fact that the break of a wing strut happened on a aircraft left about 2 years in extremely hard weather conditions (wind and snow).

AIM: Verification of the condition of the attachment of the two semi-wings front strut (part SA086)

AIRCRAFT INVOLVED / PARTS INTERESTED:

Velivoli serie Savannah™ / Savannah™ ADV

Velivoli serie Bingo

EXECUTION TERMS: check of the front strut attachment SA086

1) It is compulsory to immediately check (before the next flight) the front wing strut attachment to the main spar.

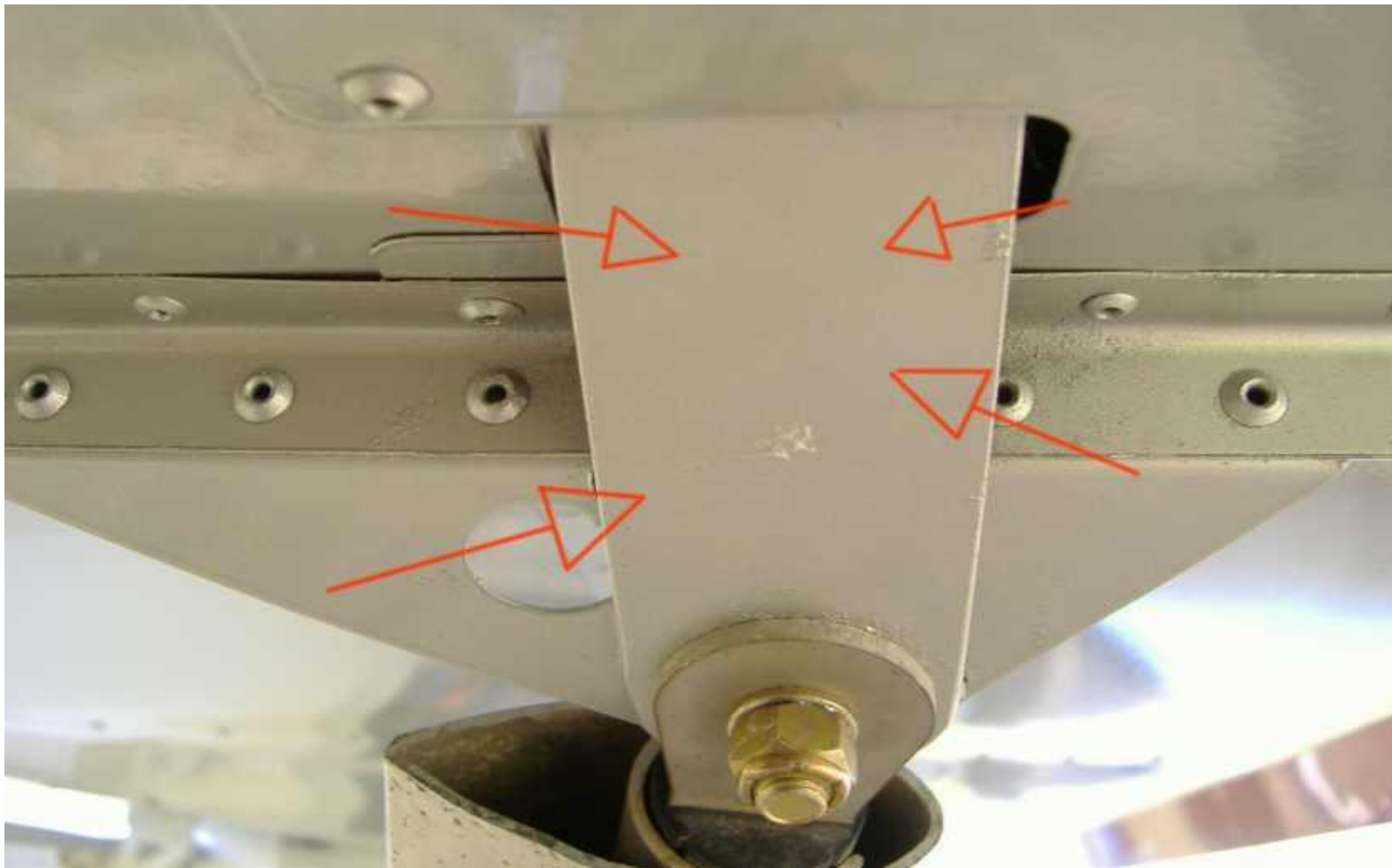
The check is visual and is intended to research the absence of cracks, deformations, corrosion or oxidation on the plate connecting the main spar to the front wing strut. The check must be done both externaly then internally with the help of a lamp (see pictures). The check must be done every 25 hours. In absence of faults the flight activity can continue.

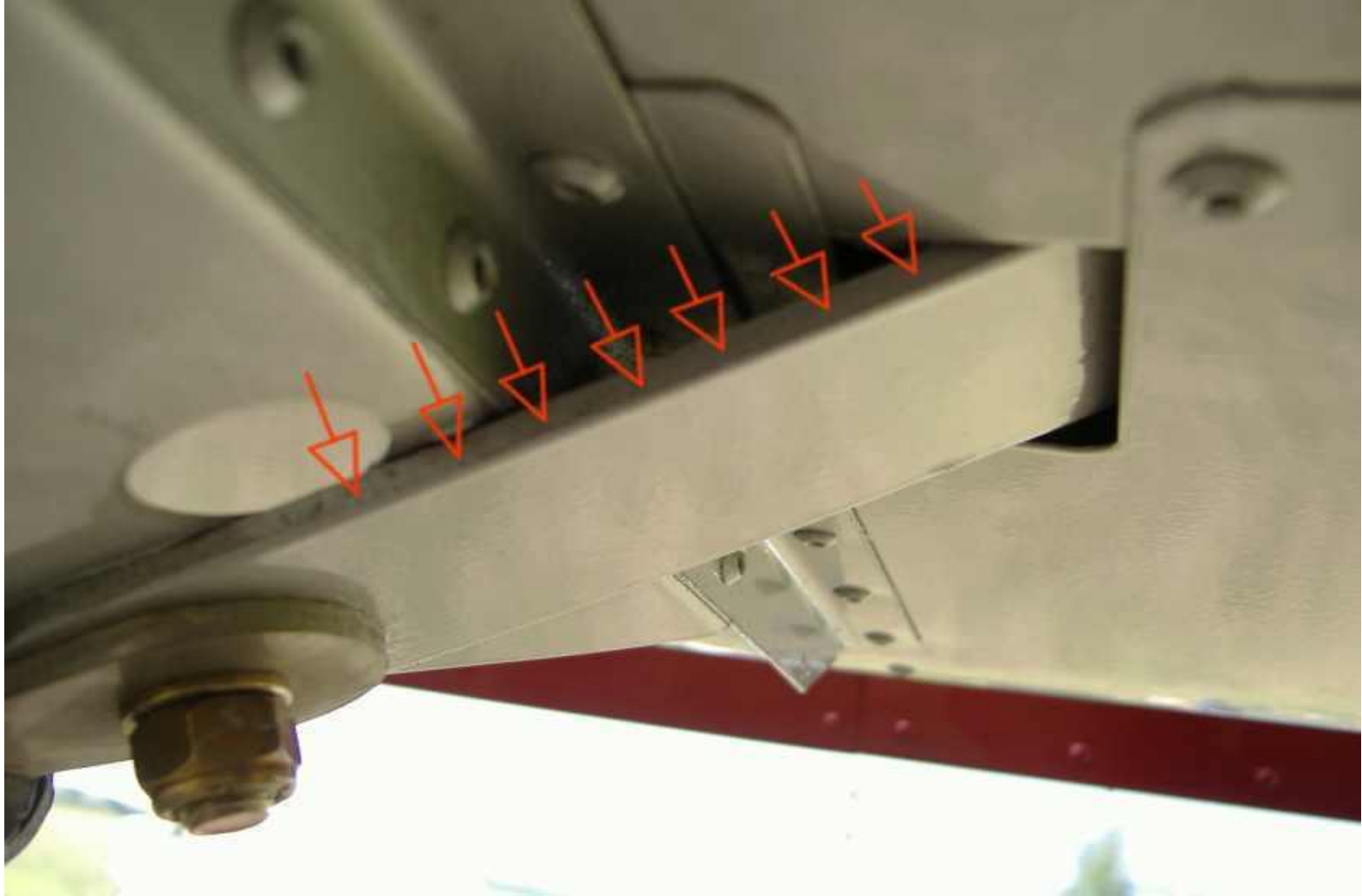
If faults are founded, the flight activity must be immediately stopped and it is compulsory to contact the ICP Srl supplying a well fotografic documentation, in order to define the next activities.

2) Towing and tie-down: It must be remembered that anchorage to the ground has to be considered as a temporary solution and not prolonged over the time; furthermore in the event of weather conditions that may lead to the tied parts to be damaged, it is recommended to carry out a thorough inspection before restoring the flight activities.

Also avoid having snow laying on the top surface so as to avoid for the weight to overtake the structural limits of the aircraft.











NECESSARY LABOUR: /

NECESSARY MATERIAL: /

SPECIAL TOOLS: /

WEIGHT AND CENTRING VARIATIONS:

REFERENCES: /

PUBLICATIONS INVOLVED: /

EXECUTION INSTRUCTIONS: /